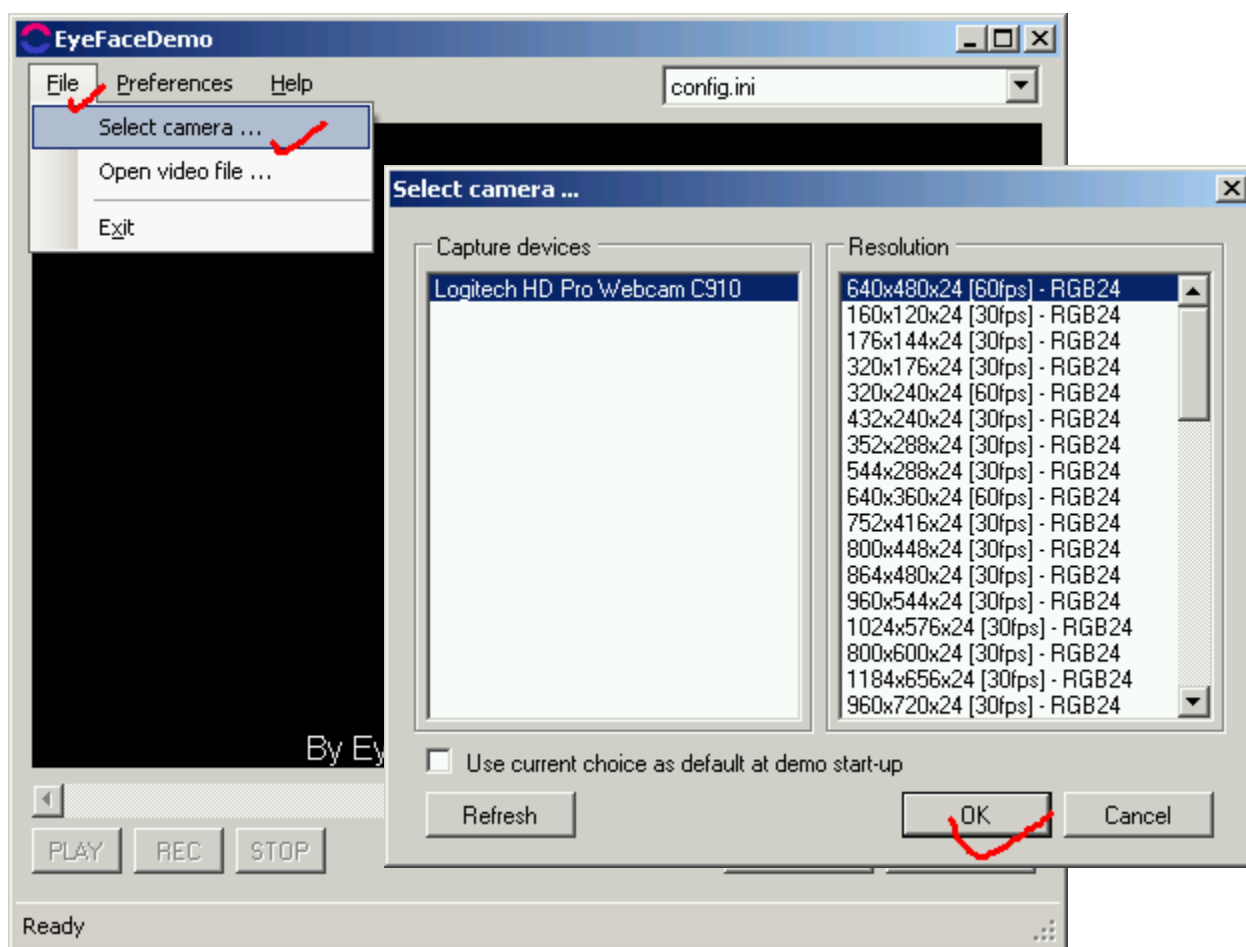


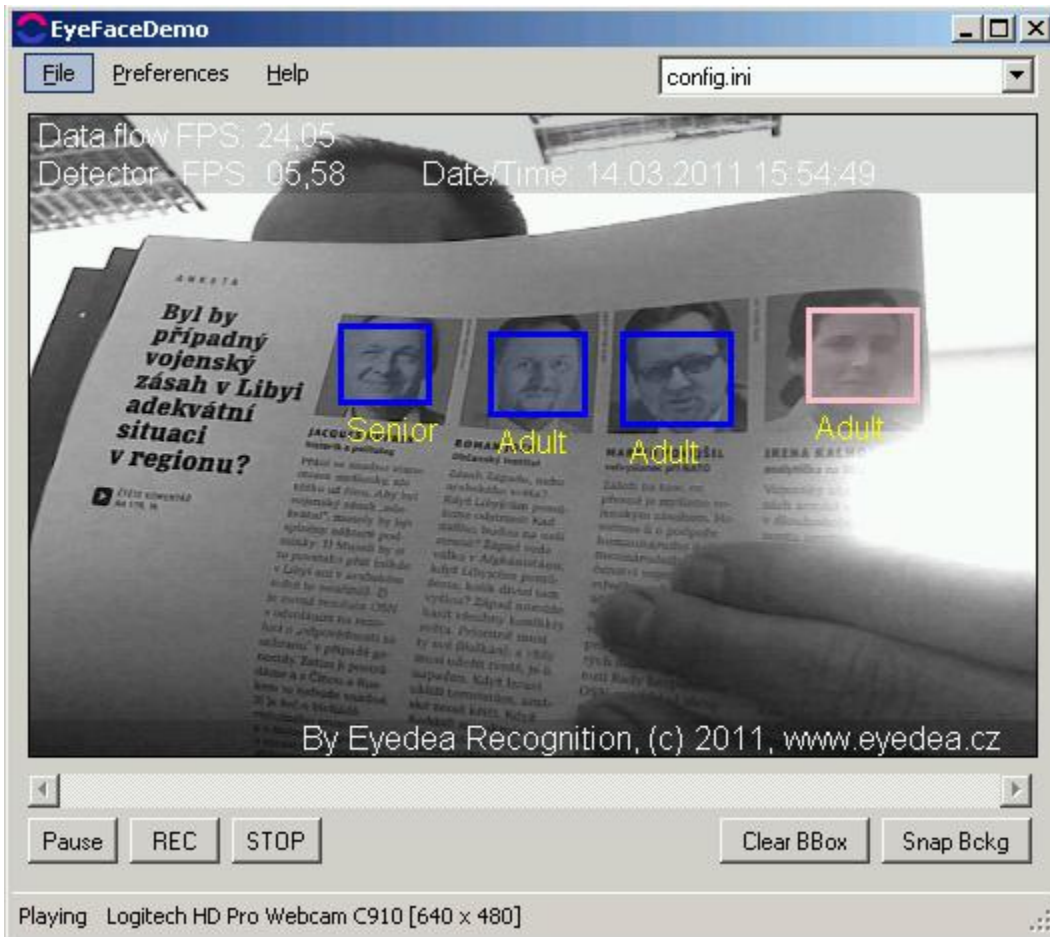
EyeFace WinXpDemo – Quick Start

1. Connect a USB webcam to your PC.
2. Start > Programs > Eyedea Recognition Ltd > EyeFaceDemo > Launch EyeFaceDemo.exe
3. Select a camera and a stream format:



4. Wait a few seconds. A live video with face detections will appear. Displayed bounding-boxes show detected faces. Colors codes estimated face gender (blue – male, pink – female, white –

not recognized).



5. IP camera support:

It is necessary to download and install **GStreamer LGPL** (<http://www.gstreamer-winbuild.ylatuya.es/doku.php?id=download>) to use IP cameras.

6. The Free Trial version use the following limits:

- a. 180s run time limit
- b. the maximal number of simultaneously detected faces in a given image is limited to 2

7. Please feel free to contact us with any questions you may have.

Eyedeia Recognition Ltd.

info@eyedeia.cz

www.eyedeia.cz